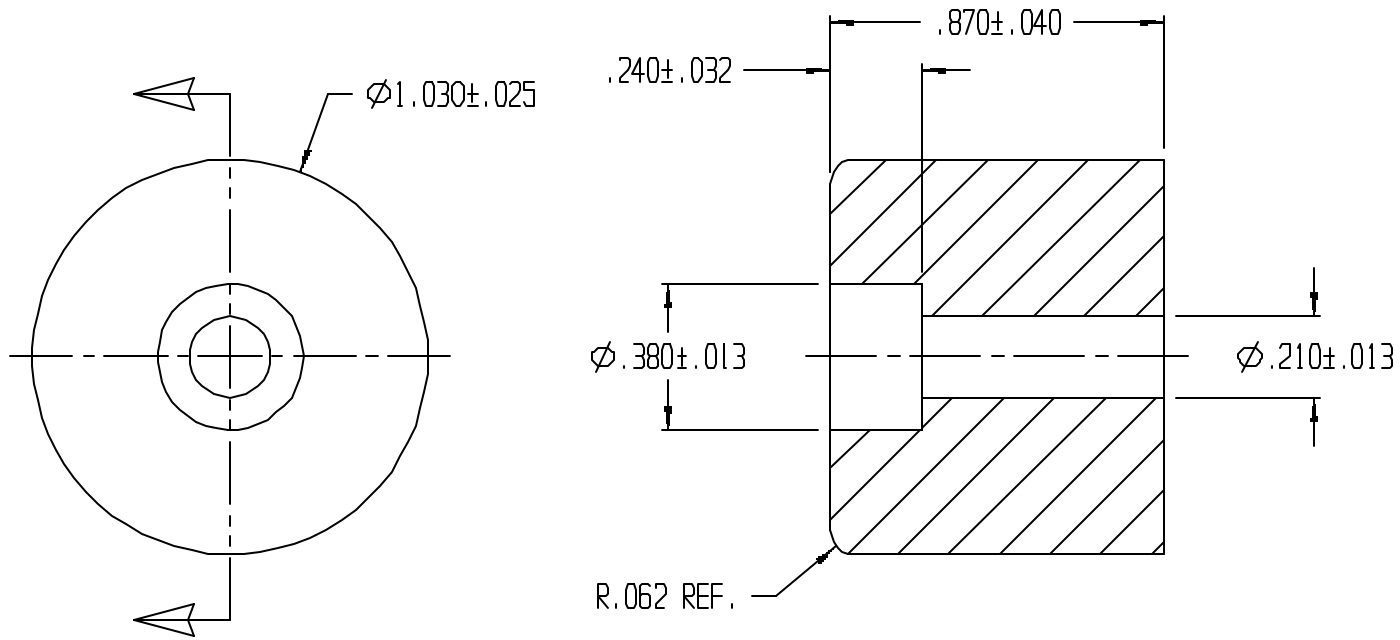


REVISIONS					
ECN	REV.	BY	DESCRIPTION	DATE	APPROVED
	3	MAD	REDRAWN TO CADKEY	04/11/02	



UNLESS OTHERWISE SPECIFIED
DIMENSIONS ARE IN INCHES
TOLERANCES ARE
DECIMALS IN ANGULAR



LAVELLE IND., INC.
665 McHENRY St. BURLINGTON, WISC. 53105
Ph. 262/763-2434 Fax 262/763-5807

TITLE RECESS BUMPER

MATERIAL F57006

SHEET 1 OF 1

DRAWN M A DEAN DATE 10/13/92

CHECK DATE

DESIGN DATE

SIZE A SCALE 2x PART NO. 789R REV. 3

FILE PATH V:\CAD FILES\Cadkey\ parts\stock\recess bumper\789R.prt